



Baker Perkins

Manor Drive, Paston Parkway, Peterborough, PE4 7AP, United Kingdom
T: +44 1733 283000 F: +44 1733 283004
E: bpltd@bakerperkinsgroup.com I: www.bakerperkinsgroup.com

From A1 Northbound

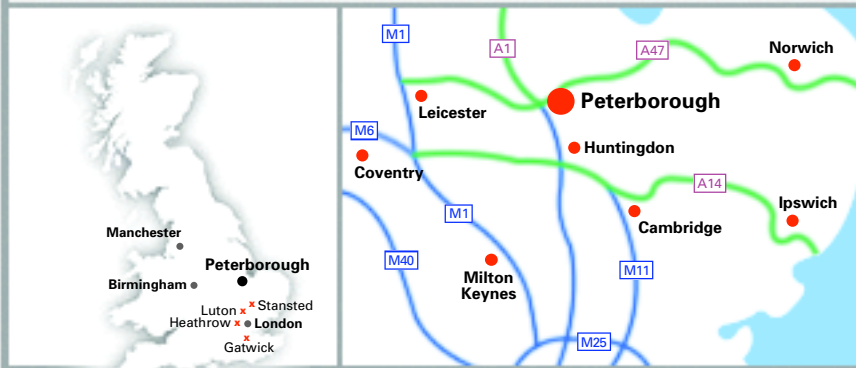
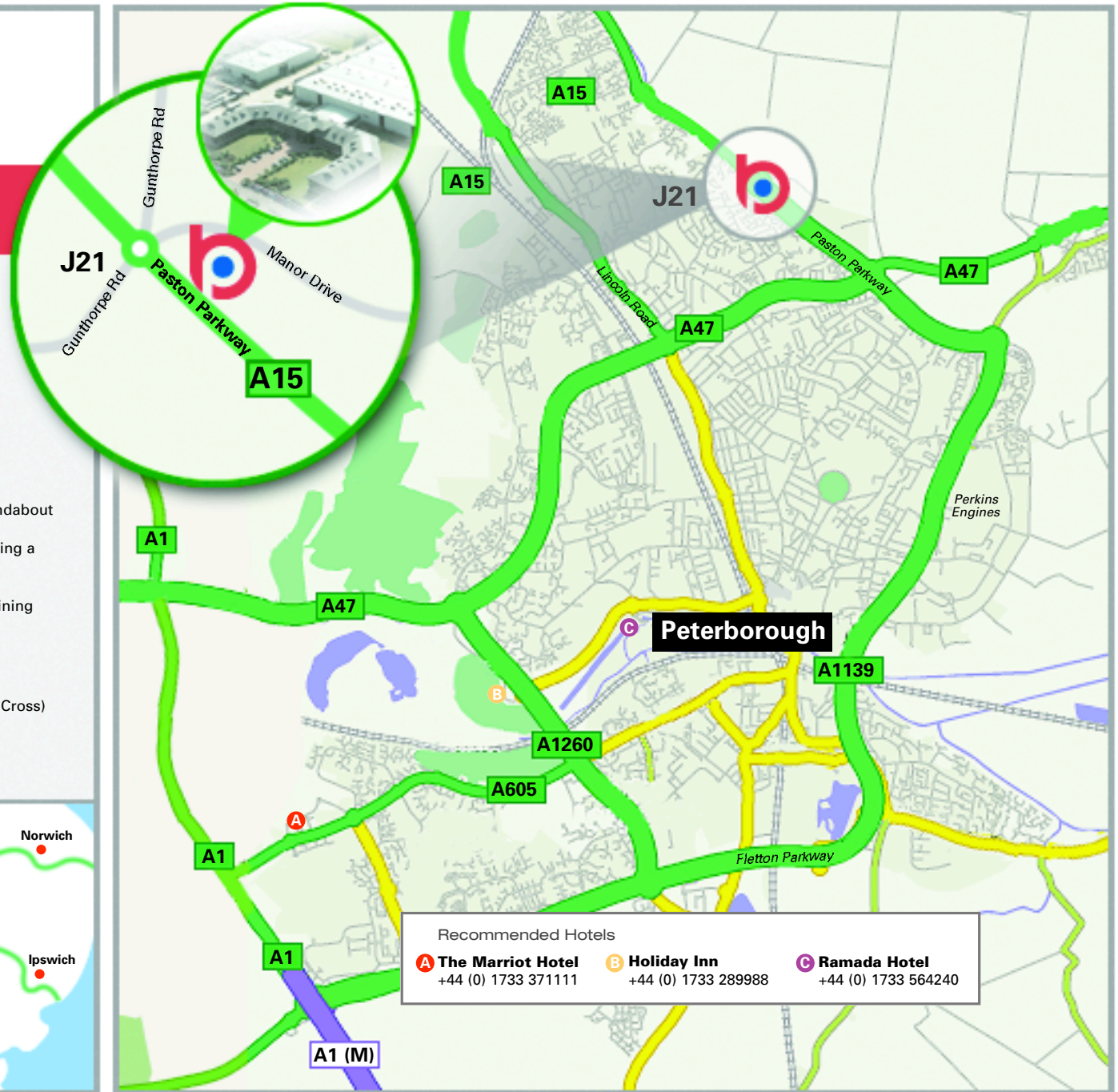
- Exit the A1M at junction 17. Keep to right hand lane on exit. Join the A1139 (Fletton Parkway) in the direction of Peterborough
- Continue along the A1139 (Fletton Parkway), for approximately 8 miles, passing the Perkins Engines factory on the right, until junction 3
- At the round about, take the first exit onto the A15 (Paston Parkway)
- Remain on the A15 (Paston Parkway), for approximately 2 miles until junction 21
- At the round about, take the fourth exit onto Manor Drive (see insert)

From A1 Southbound

- Exit A1 signposted Peterborough (North) A47. Take the first exit at the roundabout and join the A47
- After approx. 1 mile you reach a roundabout. Continue straight ahead, joining a dual carriageway
- Remain on the dual carriageway for approximately 9 miles to junction 20
- At the roundabout, take the first exit signposted Sleaford and A15. After joining A15 continue for approximately 1 mile until junction 21.
- At the roundabout, take the fourth exit onto Manor Drive (see insert)

By Train

- Peterborough is on the main East Coast line running from London, (King's Cross) and Grantham
- Services also run to Leeds, Edinburgh and Newcastle, and also Leicester, Cambridge and Norwich



Recommended Hotels		
A The Marriot Hotel +44 (0) 1733 371111	B Holiday Inn +44 (0) 1733 289988	C Ramada Hotel +44 (0) 1733 564240